

Annual Impact Report

Pūrongo ā-Tau mō te Pānga

Hui E!
Community Aotearoa

July 2021 – June 2022



www.huie.org.nz

“Thank you so much for the opportunity to volunteer with Hui E! It’s been such a fantastic and rewarding experience, and I’ll forever cherish the sense of connection I forged with different community groups, the people I met and the opportunity for impact across the community.”

– Hoa pūtea volunteer



Contents

Ihirangi

Ko mātou—About Hui E! Community Aotearoa	2
Ngā tāngata—Our people	3
Pūrongo a te Kaitiaki—Trustees' update	4
Pūrongo a te Kaiwhakahaere Matua—Chief Executive's update	6
Tā mātou tau ā-nama—Our year in numbers	8
Tō mātou pānga—Our impact	10
Te whakatupu i te kaha me te pūmautanga—Building strength and stability	12
Te whakahohe i te patuitanga me te mahi tahi—Enabling partnerships and collaboration	14
Te panoni i te pūnaha—Shifting the system	16
Mema Whanaungatanga	18
Ngā pūtea—Finances	20
Ngā mihinga—Acknowledgments	22
He Arotakenga—Hui E! Evaluation	25

Image credits

Stuart Attwood for KADAP Kawerau and
Districts Ageing in Place Incorporated

Nando Azevedo for Shelter Masterton

Abhi Chinniah for Manawako Ao

Repair Café

Applause Charitable Trust

About Hui E! Community Aotearoa

Ko mātou

Champions for the tangata whenua, community and voluntary sector

Mā tōu rourou, mā tōku te rourou, e ora ai te iwi

With your food basket and my food basket, the people will thrive.

Hui E! Community Aotearoa is a peak body to champion and tautoko the mahi of more than 115,000 tangata whenua, community and voluntary groups in Aotearoa.

This rich, vibrant and complex sector contributes nearly five per cent of the country's GDP, but organisations often operate with more aroha than money or practical support.

With hui, āwhina and kōrero, we represent, celebrate and support the sector while acting as a collective voice with government and other funders. We also provide opportunities for community rōpū to network and build greater strength and stability.



Our people Ngā tāngata

Kaitiaki o Hui E!



Andrea Jerry Ryan



Dorte Wray



Prabha Ravi



Sarah Morris



Tanya White

Thank you to our outgoing trustees

Annette Papuni-McLellan

Pania Coote

Charlie Moore

Sandy Thompson

Iris Pahau

Sarah Doherty

Kaimahi o Hui E!



**Rochelle
Stewart-Allen**
Kaiwhakahaere
Matua
(Chief Executive)



Ronja levers
Kaiwhakahaere
Kaupapa
(Project Manager)



Sakhr Munassar
Kaiwhakahaere
Kaupapa
(Project Manager)



Abhi Chinniah
Kaiwhakahaere
Whakawhiti Kōrero
(Communications
Advisor)



Tessa Johnstone
Kaitohutohu
Whakawhiti Kōrero
(Communications
Advisor)
– until February 2022



Pūrongo a te Kaitiaki

As the global pandemic rolls on, our community organisations have been stretched more than ever and we're proud of the tautoko we can offer to their important mahi.

Our community rōpū have continued to deliver more with less funding in response to challenges brought on by the pandemic. In step with this extra need, Hui E! has increased our mahi, achieving a tremendous amount with a small team.

This couldn't have happened without our new and ongoing partnerships across the motu, which help us ensure we reach those who need us. These partnerships, both formal and informal, are supportive and purposeful. A special shout-out to Volunteering New Zealand, Inspiring Communities, Community Research and Philanthropy New Zealand for the mahi we continue to share. We are definitely stronger together.

As a peak body, we continue to represent and share your voices, and kōrero with government and philanthropic funders to help drive the systemic shifts so desperately needed.

Over the year, we've continued our journey to fully embed a commitment to te Tiriti o Waitangi across Hui E!. We remain committed to the spirit of te Tiriti – a true partnership between Tangata Whenua and Tangata Tiriti, which shares power equally, celebrates cultural difference, and collectively improves hauora, health and wellbeing for all. We ground our mahi on our pou of Kaitiakitanga, Manaakitanga, Ōritetanga, and Hihiritanga.



Ngā mihi

Warm thanks to our funders, in particular to the ongoing support from the Department of Internal Affairs and Lotteries. We've also welcomed new partnerships with Todd Foundation and JR McKenzie Trust.

Ngā mihi hoki to all our voluntary trustees who gifted so much of their time to govern Hui E!, and especially to the trustees we have farewelled during the year. We truly value your mātauranga.

Thank you to Rochelle Stewart-Allen and the kaimahi for their tireless mahi, building our sustainability and creating extensive networks across the motu.

Waiho i te
toipoto, kaua i
te toiroa

Let us keep close
together, not far apart



Dorte Wray



Andrea Jerry Ryan



Pūrongo a te Kaiwhakahaere Matua

Uplifting, connecting, nourishing

It's often difficult to define what a peak body does, since our role is in supporting the sector, working in the background to tautoko the mahi of others.

I enjoyed the analogy shared by non-profit leader Vu Le. We are like the mushrooms' underground root network – the mycelium nourishes, clears toxins, connects within and across other species, and recycles nutrients. The mahi of Hui E! and similar support groups isn't so much an umbrella as it is a subterranean network, lifting the mahi of others, sharing and channelling resources. It's rarely seen but is foundational to the bearing of fruit.

I'm proud of all our kaupapa this year, but particularly our:

- Hoa Pūtea | Grant Writing Support programme
- Kaupapa Aumangea ā-Hapori | Community Resilience programme
- Hauora COVID Sector Research
- Pepa Mā | Funding and Wellbeing white papers
- He Raupapatanga o te Kōanga, me, o te Raumati | Spring and Summer Series webinars
- Work laying the foundations for the Sustainable Development Goals Alliance.



Commitment to do less

At our recent kaimahi planning day, we made a perhaps surprising commitment to slow down during the year ahead. Planning to do less seems unusual in a world that values constant growth and increasing need.

Doing less will mean we can be more focused and build structures to support different working and cultural styles. It will also better nourish our own hauora, which will give more space and time to serve our community groups more effectively.

Thank you

Thank you, as always, to the kaimahi – Ronja, Sakhr and Abhi – for their ongoing commitment to Hui E! and the community organisations we serve. You are our tuaiwi – our backbone. Also warm thanks to Tessa for all you contributed to Hui E! during your time with us.

And thanks to the many skilled volunteers who have worked alongside us this year, your mōhio tangata, passion and āwhina have been invaluable.



Rochelle Stewart-Allen
Kaiwhakahaere Matua
(Chief Executive)



Manaakitia
whenua,
manaakitia
tāngata, kokea
whakamua

Care for the land,
care for the people,
go forward



Our year in numbers

Tā mātou tau ā-nama



147

Community
organisations
engaged

1,950

Number of people
engaged on our social
media channels

86%

% of attendees
who rated our
webinars very
good or excellent

29

Email pānui
sent

9,710

Website visitors

41.7%

% increase in our social
media followers

910

Total hours of
learning delivered

6

Collaborative
projects

8

Representation
on external
bodies/groups

54

Meetings with
ministers/government
agencies



Our impact

Tō mātou pānga

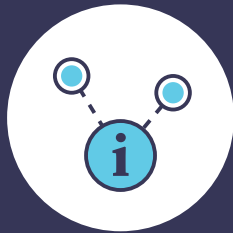




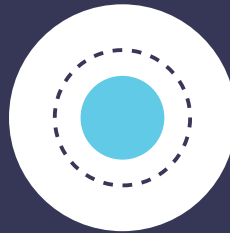
Building strength and stability

Te whakatupu i te kaha me te pūmautanga

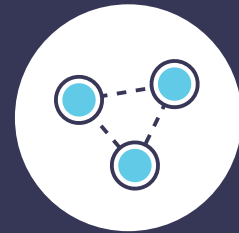
We support community groups so they:



Can identify and have more equitable access to the advice and tautoko they need



Have increased capability and capacity



Are connected, strengthened and more resilient

Our mahi this year

Free online hui – our webinars helped tangata whenua, community and voluntary rōpū with training and peer-to-peer learning opportunities. In 2021-2022 we delivered 17 free hui with over 910 hours of learning.

Hoā Pūtea | Grant Writing Support – this kaupapa helps small community groups write their first applications for grant funding of between \$5,000–\$50,000. From July 2021 to June 2022, we paired 32 small community organisations with skilled volunteer grant writers, helping them submit 22 grant applications and access more than \$100k of funding. We offered 1-1 advice on getting grant-ready, coordinated 24 volunteers and delivered three volunteer training sessions.

Tūhono Pūkenga | Skills Connect – this kaupapa connected skills-based matches to help grow the strengths, knowledge, skills and impact of community groups. This included connecting them to tertiary student consultants with skills in strategic planning, project management, HR, marketing and communications, delivered through our new partnership with Ignite Consultants Wellington.

Ratonga Tohunga Herekore | NGO Advisory Services – we continued to provide advisory support to small community groups to help them build their knowledge and strength

#getpairedwithaphotographer – this campaign focused on helping grassroots community groups tell their stories through impactful photography. Four professional photographers took more than 300 photographs with groups in Tāmaki Makaurau, Te Waiariki, Pōneke and Ōtepoti.

Mema Whanaungatanga network – we regularly connect and host hui with our formal network to forge connections with and between our members.

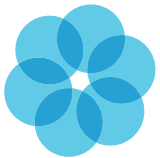


“With Hui E!’s continued support, the vision for our organisation’s future is big.”

– Community organisation



Case Study



Building wellness and skill at Wharekawa marae

Like most of us, the community at Wharekawa Marae in north-east Waikato has adapted a lot since the start of the pandemic.

Kaiwhakahaere (Administrator), Eddie Manukau, says his journey has been one of learning, supporting the community and focusing on wellbeing – and Hui E! has been a big part of that.

“I came across Hui E! through an organisation called Te Kotahi A Tāmaki, a collective of marae in Tāmaki Makaurau (Auckland). Through its networks, I was given an opportunity to upskill myself through a grant writing programme from Hui E!,” explains Eddie.

Eddie says the pandemic put more emphasis on health and wellbeing, and he was excited to participate remotely in Hui E!’s four-week Tumu Ora wellbeing programme during a nationwide lockdown.

“The programme came along when I was isolated from my whānau and living alone. It

was really appealing as a way to keep a tab on my own personal wellbeing, which was getting pretty challenging at points. Tumu Ora helped me to stay connected and focused – it was a good forum to meet others in similar roles who, maybe, also saw their mental health coming to the fore because of the pandemic. The facilitator was good at focusing on those personal elements and making the content accessible,” he says.

Eddie says the networks of support he accessed through Te Kotahi A Tāmaki give him the chance to train in a wide range of skills, including fundraising and succession.

“What I like particularly about Hui E!’s involvement is the ability to enter a room with skills at multiple levels. You don’t have to be an experienced person to access those networks and participate. You can come in absolutely green – which is how I felt when I arrived – and tap straight in,” says Eddie.



Enabling partnerships and collaboration Te whakahohe i te patuitanga me te mahi tahi

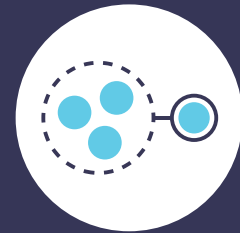
We work to connect community groups to enable:



New opportunities for meaningful and collaborative relationships



Strong, collective voices across the community sector



Better shared decision-making

Our mahi this year

Skilled volunteers – since the pandemic began, we've forged partnerships with skilled volunteers including grant writers from KPMG New Zealand for the Hoa Pūtea Grant Writing Support programme, data professionals from the Good Data Institute on data visualisation and analysis, and tertiary students through Ignite Consultants Wellington to help community rōpū maximise their impact.

Tumu Ora: Foundations of Wellbeing Series in 2021 – online hui focused on each of the four pou of wellbeing in Te Whare Tapa Whā model of hauora. Participants took time out, self-reflected and connected with others. In partnership with Woo Wellbeing and Volunteering New Zealand, the participants honestly and openly shared their experiences and found new ways to look after their personal hauora.

ComVoices membership – as an active member of the 23 national and regional peak bodies network, we helped amplify the voices of the community sector in Aotearoa to influence decision-makers.

Sustainable Development Goals (SDG) Alliance – after 12 months of kōrero, awheawhe (workshops) and rangahau (research) from Hui E! and partner organisations, we helped form the SDG Alliance and the system-level actions it needs. The mahi culminated in the 2021 SDG Summit, when 150 people attended our session on collaboration for the SDG Alliance. We completed our engagement with this mahi in 2021, and an interim leadership team is now moving the alliance through its next phase.



“We work strategically to tautoko each other. Hui E! is an ally, a friend, a support. We have a strong relationship with them where we can go with each other into places and spaces.”

– Partner organisation



Case Study

Grant writing support gives confidence to The Blackhouse founder

Every Saturday at 3 pm, Wellingtonians can tune into The Blackhouse, an hour-long radio talk show on Wellington Access Radio. The show centres on the African heritage and Black Diaspora experience in Aotearoa. Founder Liya has been the creative and financial driving force behind The Blackhouse, but she has big growth aspirations that will require more funding and expertise than she can bring.

“I don’t know anything about funding, so I knew I needed help with some grant writing assistance. Hui E! connected me with a volunteer grant writer who walked me through all the applications, bit by bit,” says Liya.

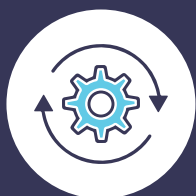
With her newfound confidence, Liya is focused on growing The Blackhouse.

“The Hui E! programme is really awesome. The funding process was challenging to get my head around at first, with lots of back and forth, but I felt supported. Now I’m not afraid to apply for funding again when I need it. I’ve got a much better idea of what the process is like,” she explains.



Shifting the system Te panoni i te pūnaha

We're helping to shift the system in which our community groups operate by:



Leading kōrero
about systemic
change



Occasionally
throwing down a
wero – a challenge



Driving better
resourcing for the
sector



Ensuring the
sector's value
and contribution are
widely recognised,
acknowledged
and used



Using a
Tiriti-relationship
framework to ensure
Te Tiriti o Waitangi
is visible and real
across the sector

Our mahi this year

2021 COVID Hauora Wellbeing Research – just before Aotearoa entered its second nationwide lockdown in August 2021, we researched more than 600 tangata whenua, community and voluntary organisations in partnership with Volunteering New Zealand. The 2021 'COVID Hauora Wellbeing Research' included an analysis of focus groups with organisations caring for Māori, Pasifika, Ethnic and Disabled communities. The research followed our 2020 'Time to Shine' research.

Data visualisation – we partnered with the Good Data Institute for a hackathon to visualise data and stories from our research in 2020 and 2021. The tools created will help us more easily access the data we need to create systemic change. We'll be releasing our Community Hauora Dashboard and Small Community Group analysis in the next year.

Pepa mā/White papers – we published two pepa mā on funding and wellbeing, drawing on the findings of the 2021 COVID Hauora Wellbeing Research. He Pepa Mā mō te Whai Pūtea ā-Hapori sets out six ways we can help solve the sector's biggest systemic funding challenges. The Hauora white paper makes recommendations to improve hauora across the sector, ensuring people are supported, valued and thriving in their mahi tahi, labours of love. We will publish two more papers in the next year.

Open Government Partnership – we worked alongside ten other civil society organisations to support the Open Government Partnership mahi. This aims to transform how government operates and make engagement between our sector and government more accessible. Te Kawa Mataaho Public Service Commission manages the overall OGP mahi.

Charities Services Sector Group Membership – our involvement in this group lets us discuss priorities, issues and perspectives to strengthen the collective understanding of Charities Services and the charitable sector as a whole.

DIA Kia Tipu, He Tipua – this Community Funding Model Programme Steering and Challenge Group provides support and advice on the review of the Lottery grants and advisory system.

Community Sector Engagement Group – we join quarterly meetings with the Minister for the Community and Voluntary Sector highlights the sector's needs and challenges and offer advice and potential solutions.

Collective Change Conversations – in partnership with Inspiring Communities, Innovation Unit, TSI's Co-Design Lab and Walk Together, we brought 30 people together to wānanga opportunities for collective change.



“Ka tautokona tō kōrero
me tō whakaaro – you
know your communities
and this kaupapa so well.
So pleased you are a voice
in these conversations.”

– Community partner



Case Study

Project Employ's new café for more inclusive communities.

The newly established charity, Project Employ, works to prepare young adults with intellectual or learning disabilities for meaningful, paid employment.

Using funding secured with the help of Hui E!, co-kaiwhakahaere (co-directors) Diane Eaglesome and Sarah Dann-Hoare are opening a training café in Auckland's Takapuna. It's all part of realising their vision of more inclusive communities.

While still in the research and exploration stage, Diane reached out to Hui E! Community Aotearoa.

“We ended up attending some of Hui E!'s webinars including ‘Creating a One-Sentence Statement for What You Do’ and ‘Fundraising in the Time of COVID’, both of which were really great,” she says.

“We were able to clarify some of our thinking, set ourselves up for successful funding applications and connect with others who support us and love what we're doing.”

Diane was paired with a volunteer grant-writer from Hui E! to help write an ultimately successful grant application – funding they needed for their new café.

“Hui E! gave us that advisory lens and some channels for professional development. It's invaluable to find someone who is experienced in your field to support you and lend their experience. Someone who has trod the journey before you will always be helpful. Hui E! did that for us,” says Diane.



Our formal member network

Mema Whanaungatanga

Our Mema Whanaungatanga formal network has continued to grow this year with active and engaged organisations and individuals from Kaitiaki to Southland.

Here's what they contribute to Aotearoa each year.

Sectors they represent



● ARTS & CULTURE



● DISABILITY

● EDUCATION

● ENVIRONMENT

● HEALTH

● KAUPAPA MĀORI

● YOUTH

● SOCIAL SERVICES

● PEAK BODY/UMBRELLA ORGANISATION

● INTERNATIONAL DEVELOPMENT



136

ORGANISATIONS
in the network

37

INDIVIDUALS
in the network



CHARITY TYPE

most of our members
are small charities

39

TIER 4
CHARITIES

40

TIER 3
CHARITIES

12

TIER 2
CHARITIES

2

TIER 1
CHARITIES

10

INCORPORATED
SOCIETIES



\$741.6M

Combined
REVENUE



\$550.9M

Combined
EXPENDITURE

Full-time - 2217
Part-time - 655



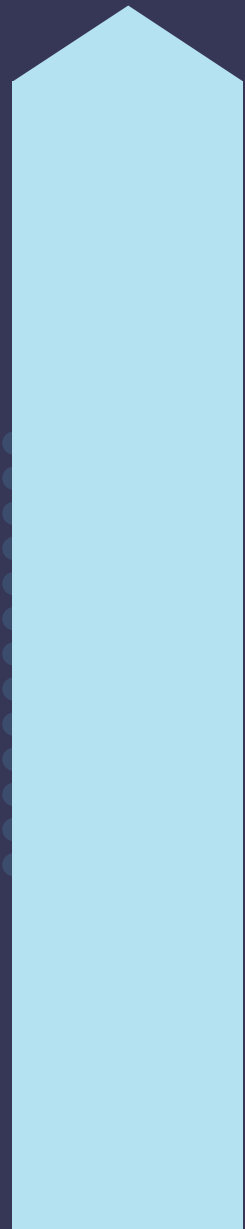
2,872

PAID STAFF
(weekly average)



80,006

Hours worked by
PAID STAFF
(weekly average)



113,737

VOLUNTEERS
(yearly average)



871,704

Hours worked by
VOLUNTEERS
(yearly average)

Finances

Ngā pūtea

Summarised Accounts

These summarised accounts are extracted from the full financial statements. Our final position will be released following our Annual Audit Review.

Statement of Financial Performance

Hui E! Community Aotearoa
For the year ended 30 June 2022

Revenue	2022	2021
Donations, Fundraising and Other Similar Revenue	324,002	186,287
Revenue from Providing Goods or Services	62,500	6,000
Interest, Dividends and Other Investment Revenue	-	2
Other Revenue	11,339	15,587
Total Revenue	397,841	207,876
Expenses		
Volunteer and Employee related Costs	244,339	156,629
Costs related to Providing Goods or Services	66,521	14,988
Other Expenses	55,863	25,009
Total Expenses	366,72	196,627
Surplus/(Deficit) for the Year	31,117	11,249

Statement of Financial Position

Hui E! Community Aotearoa
As at 30 June 2022

Assets	30 JUN 2022	30 JUN 2021
Current Assets		
Bank Accounts and Cash	199,958	133,517
Debtors and Prepayments	-	66,325
Other Current Assets	-	456
Total Current Assets	199,958	200,299
Non-Current Assets		
Property, Plant and Equipment	266	531
Other Non-Current Assets	750	1,000
Total Non-Current Assets	1,016	1,531
Total Assets	200,974	201,830
Liabilities		
Current Liabilities		
Creditors and Accrued Expenses	81,784	113,758
Total Current Liabilities	81,784	113,758
Total Liabilities	81,784	113,758
Total Assets less Total Liabilities (Net Assets)	119,190	88,072
Accumulated Funds		
Capital Contributed by Owners or Members	253,073	253,073
Accumulated Surpluses or (deficits)	(133,884)	(165,001)
Total Accumulated Funds	119,190	88,072



Acknowledgements

Ngā mihinga

Key funding partners

He mihi nui to our key funding partners, whose tautoko and trust enables us to deliver our mahi with greater impact.

- Department of Internal Affairs
- Lottery Grants Board
- Todd Foundation
- J R McKenzie Trust

Other funders

- Cognition Education Trust
- Foundation North
- Wellington Community Fund



Our collaborators and kaitautoko

He mihi nui to these generous organisations and people who worked with us to tautoko the wider tangata whenua, community and voluntary sector:

- Access Radio
- Affinity Group of National Associations (AGNA)
- Ara Institute of Canterbury Ltd
- Ara Taiohi
- Centre for Social Impact
- ChangeMakers Resettlement Forum
- Charities Law Reform
- Charities Services – Ngā Ratonga Kaupapa Atawhai
- Christchurch City Council
- CIVICUS – World Alliance for Citizen Participation
- Community Research
- ComVoices
- Te Tari Taiwhenua - Department of Internal Affairs
- Do Good Jobs
- Dunedin Community Builders
- Frank Advice
- Funding Network HQ
- Fundraising Institute New Zealand
- Good Data Institute
- Haemata Limited
- Hāpai Hapori – Community Operations
- Ignite Consultants Wellington
- Ihi Research
- Innovation Unit
- Inspiring Communities
- JB Were
- KPMG New Zealand
- LEAD Centre for Not-for-Profit Leadership
- Match Te Puna Taurite
- Mentoring Foundation of New Zealand
- Ministry for Ethnic Communities
- Network Waitangi Ōtautahi
- New Zealand Coalition to End Homelessness
- New Zealand Council of Christian Social Services
- New Zealand Navigator Trust
- Niwha Creative
- Ngahere Foundation
- Outsights Insights
- Open Collective
- Philanthropy New Zealand
- Remutaka Māori Women's Welfare League and Awe Consultants Ltd
- School of Government, Victoria University of Wellington
- SocialLink
- Social Service Providers Aotearoa
- Strategic Grants
- Te Puna Oranga o Ōtaki
- Taurapa Limited
- The Gift Trust
- Transparency International New Zealand
- United Nations Association of New Zealand
- University of Canterbury
- Volunteering New Zealand
- Walk Together NZ
- Waikato Wellbeing Project
- Wellington City Council
- Woo Wellbeing
- XRB External Reporting Board | Te Kawai Arahi Purongo Mowaho





Case Study

Practical support and connection to help Applause thrive

Born of the increased challenges and pressures of the COVID-19 pandemic, Applause Charitable Trust is supporting the staff of NGOs in Aotearoa to continue caring for vulnerable New Zealanders. Creator Jen Deben wanted to connect kaimahi and community workers with free or discounted goods and services from local businesses and volunteers.

During her initial rangahau | research, she learned about Hui E! Community Aotearoa and the tautoko we could connect her to.

“There’s so much work involved in establishing a charity, and certainly an element of not knowing what you don’t know. For us, it was about bridging that knowledge gap as quickly as we could. The work we’re doing is very much now, not in some future state. Hui E! was hugely supportive with that,” explains Jen.

Hui E! has supported Applause with grant writing help, learning opportunities, critical connections and updates.

“It was extremely valuable for us to learn how labour-intensive the grant writing process can be, and to use that process with Hui E!’s volunteer grant writer to nail down some of our key messaging and streamline future grant proposals. We weren’t successful in that first application, but we learned so much about who we are and the level of information we need to be collecting on a regular basis,” says Jen.

Jen says that when Applause first launched, it was a bit broad in its approach – working with Hui E! helped focus on housing providers first before moving on to support other sectors.

“It’s a much more sustainable way to operate for the size of our charity, and it’s helped to clarify our purpose and connect with our audience in a way that resonates with them.”

Looking back, Jen sees that being part of a collaborative network was crucial, and she’s grateful to Hui E! for facilitating this early in Applause’s journey.

“In signing up for Hui E!’s network and regular newsletters, I realised the importance of collaboration and knowing what is going on elsewhere in Aotearoa. When I recently attended the Hui E! AGM, I saw how much amazing mahi they produce without much funding themselves and how many volunteers they have supporting them. Knowing how supported they are by their own community is incredible, and also well-deserved. They treat the people in their network and their mahi as both valuable and valued, and they’re always ready and willing to help, despite how busy they must be.”

Hui E! Community Aotearoa champions the community sector for a fair and just Aotearoa.

Ko tā Hui ē! Community Aotearoa he whakatairanga i ō tātou hāpori, kia tika ki te katoa, kia tōtika a Aotearoa.

Hui E! Evaluation

He Arotakenga

A respected and trusted voice for the sector

After our first external evaluation in September 2021, we were encouraged to learn that Hui E! is seen as a respected and trusted voice for the sector. We were evaluated as being on the right path, having strengthened recently, and that we add value by:

- **Spotlighting sector value, needs and issues**
 - Raising sector voice
 - Providing capability support
- **Providing trusted sector leadership and representing the sector to government**
 - Providing useful information and ideas to the sector
 - Being an ally and collaborating for impact.



Website: www.huie.org.nz
Post: PO Box 25333, Wellington 6140
Email: admin@huie.org.nz

 [huie_community](https://www.instagram.com/huie_community)

 [@huie.org.nz](https://www.facebook.com/huie.org.nz)

 [hui-e-community-aotearoa](https://www.linkedin.com/company/hui-e-community-aotearoa)